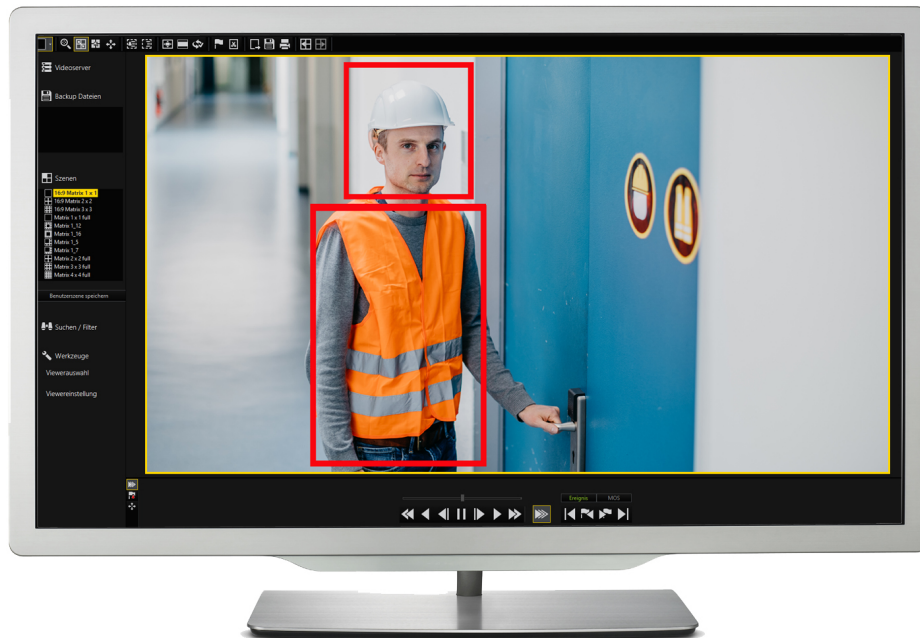


Detection of Personal Protective Equipment G-Tect/ProtectiveEquipment



The option based on artificial intelligence (AI) automatically detects in the video image whether your personnel are wearing the specified warning vests and/or protective helmets in the designated area. If one or both criteria are not met, access to an automatic door locking system, for example, can be denied or a warning displayed.

- Production halls from medium-sized to large corporations.
- Warehouses, for example with high-bay racking systems.
- Large construction sites.
- Various branches of the mining industrie.

- Control of your employees regarding the wearing of the prescribed protective equipment without any additional personnel effort.
- Realistic compliance with a Zero-Accident Strategy
- Avoidance of work-related accidents and resulting health damage
- Sensitization of employees for compliance with safety regulations after breaks or meetings
- Visual documentation as proof of compliance with all legally prescribed protective measures
- Image boost through pioneering role
- Interface to other systems, e.g. time and attendance, is possible
- Protection of privacy rights
- For individual additions to your requirements, we will be happy to consult you.

Technical Data

Description	Functions
Detected Objects	Persons with safety vests and/or protective helmets
Regions of Interest	For an even more specific result you can define the area of a scene where the detection should take place.
Very low false alarm rate	Due to the intelligent linkage of several detection this system offers high reliability.
Actions	Actions can be used for managing events like refusing the access to the danger zone.
Alarms	Alarms will be shown as rectangles in G-View.
Additional object detections	Customer-specific developments are possible, please contact us.
Required Options	G-Core/CamConnect (8.34022) G-Tect/AI-Connect (8.34250)
Minimum Hardware Requirements	G-ST with Windows 10 Intel i7 Prozessor or better, i3 or i5 with reduced frame rate. G-St 500+ and G-St 2000+ are not supported. 16GB RAM.