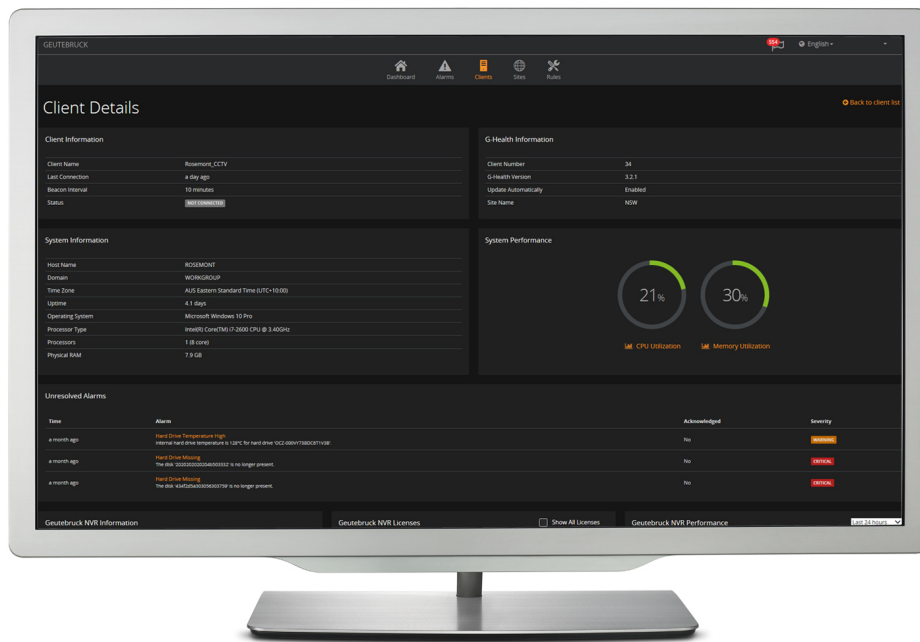


Integration of further G-Core systems to the G-Health Server

G-Health/ClientConnect



- Detailed, automatic function control of all active system components with low network load.
- Simple parameterization of behavior rules for malfunctions.
- Automatic email notification of prioritized incidents.
- Statistics and history display as well as various display filters.
- Comprehensive, user-friendly rights management.

This option is used to connect a G-Core system to the G-Health monitoring software. This allows the performance and functionality of the connected G-Core system to be monitored.

This option is used to connect a G-Core system to the G-Health monitoring software.

Availability/functionality	Geutebrück G-Scope / G-Core from version 1.2.7.55 and GeViScope from version 7.6.972		
Alarm analysis	Analysis in real time or delayed, depending on the selected alarm priority		
Health information	<ul style="list-style-type: none"> · Software version · Database size · Camera configuration · Data throughput · Options/license · Operating system · Processors (CPU, cores, utilization) 	<ul style="list-style-type: none"> · Network interfaces · Controller (array) · HDD + SSD <ul style="list-style-type: none"> » total / free storage space » utilization, temperature » firmware » SMART status 	
Set-up options	Adjustable reactions to health alerts Various means of notification, e-mail (SMTP) and NVR event categorization and prioritization of health alarms, management of multiple sites Management of multiple users and user groups Linking of sites / server with user / user groups		
Additional functions	Mobile management via web interface (responsive design), export and transfer of setup files Export of detailed overviews (hardware information), automatic updates		
Languages	German, English, French, Spanish		
Software and options	G-Health server with G-Health web interface Software package with its own installer, including dongle with a G-Health/ClientConnect software option, order No. 3.06520	G-Health Client Software package with its own installer. The software package is installed once per client, G-Scope (G-Core) or GeViScope.	G-Health/ClientConnect Software option for activating additional G-Health clients on the dongle of G-Health server Order no. 8.34090
Notes for project management	The maximum number of G-Health/ClientConnect software options per G-Health server or dongle is 1000.		
System requirements	G-Health Server	G-Health Web interface	G-Health/ClientConnect
Operating systems / compatible browsers	Windows Vista SP2 (32/64 bit), Windows 7 / 8.1 / 10 (32/64 bit), Windows Server 2003 (32/64 bit), Windows Server 2008 (32/64 bit), Windows Server 2012 (64 bit), Windows Server 2012 R2 (64 bit).	Google Chrome v28+, Apple Safari v6+, Mozilla Firefox 28+, Microsoft Internet Explorer 11+, Microsoft Edge.	Microsoft Windows XP SP3 (32 bit), Windows Vista SP2 (32/64 bit) , Windows 7 (32/64 bit), Windows Server 2003 (32/64 bit), Windows Server 2008 (32/64 bit), Windows Server 2012 (64 bit), Windows Server 2012 R2 (64 bit).
Memory	4,096 MB or greater	-	512 MB or greater
Free space requirement	10 GB	-	2 GB
Additional required software (automatically installed by the installation wizard, if not available)	Microsoft.NET 4.0, Oracle Java JRE 1.7 or higher, Joyent Node.js 0.12.0 or higher, ElasticSearch 1.5 or higher.	-	Microsoft.NET 4.0
TCP ports	TCP/3000 (incoming), TCP/4002 (incoming)	HTTP/3000 (outgoing)	HTTP/4002 (outgoing)
Notes on installation	We recommend installing the G-Health server on a separate server on which no third-party services run.	-	We recommend installing G-Health clients on computers that work with the Geutebrück NVR software.