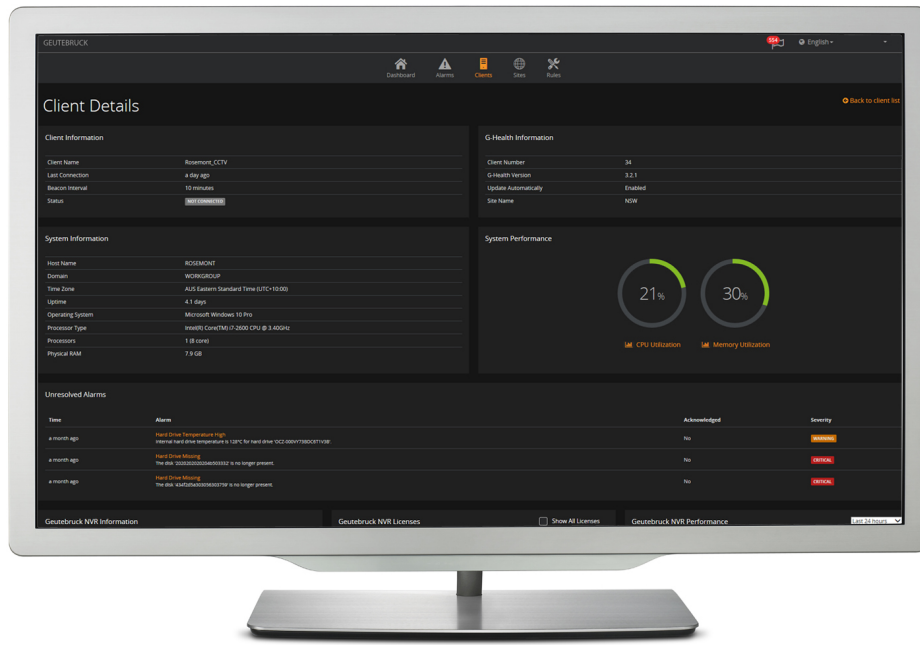


Monitoring Software (Softdongle) G-Health S



- Reliable detection of hardware errors.
- Possibility of quick troubleshooting by reporting components that are not fully functional.
- Notification via e-mail or web interface.
- Easy installation and integration in new and existing systems with up to 1000 recorders or servers.
- User-friendly web interface with analysis and overview functions as well as status displays of the components.
- Easy configuration of health alerts, rules, clients and priorities.

G-Health prevents system failures by a permanent function control. If a critical condition, such as a camera failure or a database error, is detected, the responsible administrators or maintenance technicians immediately receive a corresponding e-mail or a G-Health Alarm in their web interface, stationary or mobile and thus have the possibility to react before a failure occurs.

- Monitoring the performance of G-Core systems.
- Timely maintenance and preventive replacement of hardware components.

Technical Data

Availability/functionality	Geutebrück G-Scope / G-Core from version 1.2.7.55 and GeViScope from version 7.6.972		
Alarm analysis	Analysis in real time or delayed, depending on the selected alarm priority		
Health information	<ul style="list-style-type: none"> • Software version • Database size • Camera configuration • Data throughput • Options/license • Operating system • Processors (CPU, cores, utilization) 	<ul style="list-style-type: none"> • Network interfaces • Controller (array) • HDD + SSD <ul style="list-style-type: none"> » total / free storage space » utilization, temperature » firmware » SMART status 	
Set-up options	Adjustable reactions to health alerts Various means of notification, e-mail (SMTP) and NVR event categorization and prioritization of health alarms, management of multiple sites Management of multiple users and user groups Linking of sites / server with user / user groups		
Additional functions	Mobile management via web interface (responsive design), export and transfer of setup files Export of detailed overviews (hardware information), automatic updates		
Languages	German, English, French, Spanish		
Software and options	G-Health Server S (Soft-Dongle) with G-Health web interface Software package with its own installer, including dongle with a G-Health/ ClientConnect software option, order No. 3.07520	G-Health Client Software package with its own installer. The software package is installed once per client, G-Scope (G-Core) or GeViScope.	G-Health/ClientConnect Software option for activating additional G-Health clients on the dongle of G-Health server Order no. 8.34090
Notes for project management	The maximum number of G-Health/ClientConnect software options per G-Health server or dongle is 1000.		
System requirements	G-Health Server	G-Health Web interface	G-Health/ClientConnect
Operating systems / compatible browsers	Windows Vista SP2 (32/64 bit), Windows 7 / 8.1 / 10 (32/64 bit), Windows Server 2003 (32/64 bit), Windows Server 2008 (32/64 bit), Windows Server 2012 (64 bit), Windows Server 2012 R2 (64 bit).	Google Chrome v28+, Apple Safari v6+, Mozilla Firefox 28+, Microsoft Internet Explorer 11+, Microsoft Edge.	Microsoft Windows XP SP3 (32 bit), Windows Vista SP2 (32/64 bit) , Windows 7 (32/64 bit), Windows Server 2003 (32/64 bit), Windows Server 2008 (32/64 bit), Windows Server 2012 (64 bit), Windows Server 2012 R2 (64 bit).
Memory	4,096 MB or greater	-	512 MB or greater
Free space requirement	10 GB	-	2 GB
Additional required software (automatically installed by the installation wizard, if not available)	Microsoft.NET 4.0, Oracle Java JRE 1.7 or higher, Joyent Node.js 0.12.0 or higher, ElasticSearch 1.5 or higher.	-	Microsoft.NET 4.0
TCP ports	TCP/3000 (incoming), TCP/4002 (incoming)	HTTP/3000 (outgoing)	HTTP/4002 (outgoing)
Notes on installation	We recommend installing the G-Health server on a separate server on which no third-party services run.	-	We recommend installing G-Health clients on computers that work with the Geutebrück NVR software.